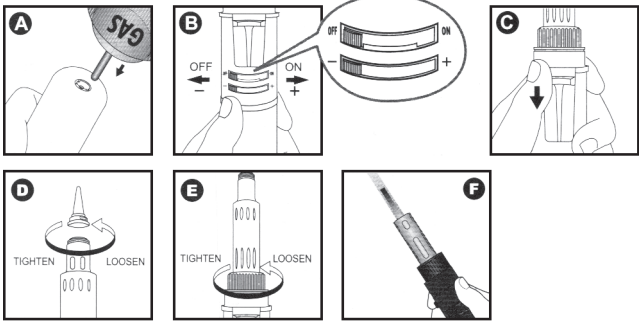


Specifications

- Weight: 150g (no gas / with cap)
- Fuel: Butane
- Gas Container Capacity: 22ml
- Operating Time: more than 125 minutes
- Size (L x W x Ø): 245 30 x 25mm
- Approx. Temperature: 250 – 500°C (soldering iron)
- Up to 560°C (heat blower)
- Up to 1.300°C (torch)

Please Read All Instructions And Warnings Before Use.

Instructions (Butane Not Included)



Refueling

1. Make sure the GAS On/Off switch (B) is at „OFF“ position before filling.
 2. Turn the unit upside down and firmly push the butane can into the filling valve (A). The Gas Container should be filled in seconds.
- PLEASE ALLOW A FEW MINUTES AFTER FILLING FOR THE GAS TO STABILIZE.

Ignition (For use as a Soldering Iron)

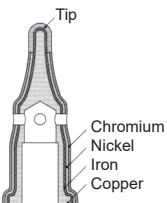
1. Turn on the fuel by moving the Gas On/Off switch (B) all the way to right and leave it at „ON“ position.
 2. Ignite by pressing the Ignition Button (C).
- You may see the tip housing window will glow orange after 1 or 2 seconds.
3. Adjust the intensity of heat by moving the Gas Adjustment Lever (B) observing the „+“ and „-“ signs on the body.
 4. To turn off, slide the Gas On/Off switch (B) all the way to the left.

Ignition (For use as a Heat Blower)

1. Remove the soldering tip by simply unscrewing. The Catalytic Heat Chamber becomes a Heat Blower Tip (D).
 2. Turn on the fuel by moving the Gas On/Off switch (B) all the way to right and leave it at „ON“ position.
 3. Ignite by pressing the Ignition Button (C).
- You may see the tip housing window will glow orange after 1 or 2 seconds.
4. Adjust the intensity of heat by moving the Gas Adjustment Lever (B) observing the „+“ and „-“ signs on the body.
 5. To turn off, slide the Gas On/Off switch (B) all the way to the left.

Ignition (For use as a Torch)

1. Remove the soldering tip, and unscrew the knurled nut (E) and remove the Catalytic Heat Chamber to torch function (F).
2. Turn on the fuel by moving the Gas On/Off switch (B) all the way to right and leave it at „ON“ position.
3. Ignite by pressing the Ignition Button (C). You may see the blue flame immediately.
4. Adjust the intensity of flame by moving the Gas Adjustment Lever (B) observing the „+“ and „-“ signs on the body.
5. To turn off, slide the Gas On/Off switch (B) all the way to the left.



PROFESSIONAL PLATED TIP

- Soldering Iron Tips are shaped from a copper bar, the coated with protective iron plating.
- though the coating is thick for improved durability, it has good heat conductivity for more efficient thermal recovery.

WARNINGS (State of California only):

This product, when used for soldering and similar applications, produces chemicals known to cause cancer and birth defects or other reproductive harm.

Transportation: Hazardous Materials Regulations forbid the carriage of butane or other flammable gas products on passenger aircraft.

Do not pack this item or any other flammable gas item, in any checked or carry-on baggage.

WARNINGS



Keep and store away from children



Be sure flame is completely out after each use



Never expose to heat above 120°F (49°C) or to prolonged sunlight



Ignite away from face and clothing

IT1160 0000



4 260076 874738

www.innotools.de